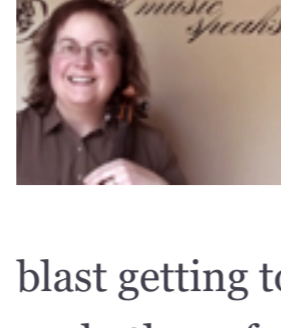


QUAVERS

Kitsap Music Teachers Association Monthly News

October 2019 News Digest - Find Full Event Details at our Website, kitsapmusicteachers.org



President's Message

It's October! and I hope you've had a good kickoff to your teaching year so far. I really enjoyed the September Kickoff meeting, MC'd by Laura Meredith and Melanie Stroud. It was great to see so many faces, both familiar and new! We had a blast getting to know one another better and sharing what KMTA has meant to us, both professionally and personally. We also had time to remember and honor Darden Burns. It was so inspiring to hear firsthand how much she poured into her students, community, and other teachers during her time with us. I think we all took away some fresh motivation to make a difference like she did, in whatever ways we can. Many thanks to Laura and Melanie for cooking up an "in-house" program that was so delightful and different!

My ideas for this column are usually sparked by what I'm encountering in my own teaching at the moment. As I shared last month, in some ways I am starting fresh at a new location. While many of my students made the move with me, some did not. Instead, I have more new-to-me students this year than I have had in quite awhile. As I introduce them to "the way I do things," it has been an opportunity to review just that, and think about what I want to change or freshen up instead of just doing the same old things again this year.

For ideas I turn to books, articles and videos: first about the latest in pedagogy, but closely followed by the business of music-teaching. I think it's fascinating to think of our teaching studios as small businesses, and apply principles of entrepreneurship to build them up and keep them strong. You may not self-identify as an entrepreneur, but according to [Business News Daily](#), if these phrases describe you, you already are one: Driven by an innate need to create, build and grow • constant hunger for making things better • turning possibility into reality • imagining new ways to solve problems • **possess grit** • balance strong vision with a willingness to embrace change • striking out on your own • passion for learning • courage to commit and persevere • a great deal of resourcefulness • continually testing your assumptions • be people-oriented • see opportunity everywhere • take a calculated risk • look at the bigger picture • having the **creativity** to question, the **strength** to believe and the **courage** to move!

Our October meeting will not be on the Second Friday this month; instead, please join together with all our District III teachers for a special workshop on Saturday, October 12. Laura's article below has the details!

Jane Melin

President, Kitsap Music Teachers Association



From the VP: Meeting News

As Jane mentioned above, we will not be having a chapter meeting this month, but we do have the opportunity to gather with nearby chapters at the District III Workshop! **Mary Kogen** will present "**Hear, Feel & Move!**" *A Whole Body, Whole Brain Approach to Rhythm & Harmony*. Doesn't that sound awesome?! I am fascinated with how the whole body interacts with the whole brain as music is learned; it's so much more than our eyes, ears, and fingers. In my recent training, I've learned a lot about how children learn musical (and other) concepts with their whole bodies. We've all heard the term "muscle memory", but we don't have to only use the muscles directly involved with a given skill; why not use MORE of the 600+ muscles in our body to remember concepts and patterns!

Mary Kogen spent her professional career at Portland State University, teaching music teachers how to teach. Mary retired from PSU in 2003, after teaching for 26 years. She now holds seminars around the country on *learning, curiosity* and *play*. She integrates mind and body, super-charging our abilities for *learning, thinking* and *creativity*. From teens to seniors, participants in this workshop will learn about incorporating rhythm, more *enthusiasm*, more *curiosity* and more *motivation*. Come and enjoy a new outlook on teaching skills. Dress comfortably and expect to use your whole body in this interactive workshop! There will be a mid-morning break with light snacks and beverages served.

Want to go for free?? Register now! If registration is *received* by **October 7** (snail mail), KMTA will reimburse you for the entire fee! If you register after that (or pay at the door) you can be reimbursed \$20. Contact Sally Camp (ameasureatime@gmail.com) for reimbursement.

Saturday, October 12, 2019

9:00 am to 1:00 pm

Pacific Lutheran University | Mary Baker Russell Music Center, Tacoma

If you have questions please text Marilyn Jacobson @ 253-820-7041.

Laura Meredith

Vice-President, Kitsap Music Teachers Association

Visit our **MEMBERS ONLY** page to view updated versions of our membership directory and annual calendar, as well as sign ups for **Christmas at the Mall!** All active members will receive a separate email with the password.

Kitsap Young Musicians Festival

Registration is open for the Kitsap Young Musicians Festival! You can register and pay [on the KMTA website](#). The fee is \$5 per student (see website for details about ensembles and nonmember fees.)

Registration closes on October 31st - Halloween! You'll receive your students' scheduling assignments the following week.

This year's festival will be held on Saturday, November 16, at St. Antony of Egypt Episcopal Church, 11885 Old Frontier Road NW, Silverdale.

For those who have not participated before, The Kitsap Young Musicians Festival (KYMF) is a series of recitals held throughout the day featuring student performers from all over the county. All instruments, ages, musical styles and levels are welcome. Recitals are approximately one hour. Students only need to stay for their assigned recital (although anyone is welcome to attend as many programs as they would like to hear!). We always enjoy fall-themed refreshments and it is a wonderful experience for the kids. For many studios, a KYMF recital is a perfect "first performance" to kick off the year.

If you know a teacher in Kitsap County who is not yet a member of KMTA but might be interested in having students participate in our festival, please pass on their email to me and I'll send them a personal invitation. We would like to grow KYMF as a community event and you can help!

If you have questions about KYMF, please contact me: ks88keys@gmail.com. I look forward to seeing you and your students at the festival!

Krista Seely, KYMF Chair

Music Artistry Program- Remember 15th!

If you are new to the [Music Artistry Program](#), the 15th of some months are the important dates to remember.

October 15 : This is the last day that you can pay your dues as a KMTA/WSMTA member and still be able to participate in MAP, unless you are a new member. New members have until January 15 (see below).

November 15 : This is the last day that you can email me (sungamble66@yahoo.com) to report your preliminary **minutes** (just minutes; no other details needed.) This process is to find out if I secured enough time with visiting artists. If we need more time, I need to contact more visiting artists as soon as possible. If I secured too many hours, I also need to let them know so that they can free their schedule for other things.

Since we are having some major changes in our chapter this year, this process is very important. You have been wonderful in the past, so I believe that you will be continued to be cooperative and proactive.

Print out the registration worksheet from the [WSMTA site](#) and start filling it out. Be sure to include your consultation time (either 10 or 20 minutes) and Honors Recital Selection time (5 minutes). It doesn't have to be the exact number, but I would really appreciate if the discrepancy is not more than 20 minutes or so.

December 15 : This is last day that Piano Teachers can do the registration on the WSMTA site. (Strings and Vocal MAPs have their own deadlines, TBA.) Please read the teacher's handbook on the [WSMTA site](#) and FAQ on the [KMTA site](#). Murphy's law seems to be at work at this time, so please do not procrastinate.

January 15: If you are new to our chapter, this is the last day you can pay your dues in order to participate in Music Artistry Program. You will also get the state approved schedule no later than this date.

February 15 : Day after Valentine's – keep the chocolates!

March 15 : Chapter Honors Recital

April 15 : Tax Day!

Sun Gamble, Keyboard MAP Chair

For questions about Vocal MAP: *Melanie Stroud*; Strings MAP: *Melanie Kurtzbein*

First Sunday Concerts



On October 6th, First Sunday Concerts presents Marina Albero. Recipient of the Golden Ear Award as Emerging Artist 2018, Marina Albero burst onto the Seattle jazz scene in September of 2014. Since that time, she has energized the scene with her quartet, and in duo and solo piano performance. Her style reflects her musical journey that began with touring the world as a child with her musical family, to her teen years spent studying in Cuba, to her association

with flamenco forms in Spain. The listener can hear a world of music in her playing, from jazz, to classical, to flamenco, and undeniably, the Afro-Cuban rhythms that are so foundational in jazz music. She will be joined by the acclaimed trombonist and unique composer Naomi Siegel.

The concert takes place at Waterfront Park Community Center - 370 Brien Drive at 4:00. Tickets are available at [Brown Paper Tickets](#) or at the door. For more information visit www.firstsundayconcert.org.

Contradance workshop

An upcoming dance is Saturday, November 16th at Island Center Hall, 8395 Fletcher Bay Road, Bainbridge Island, from 7:30 - 10:30 PM. Our caller, Gwen Rousseau will give a "How to Contradance" workshop on the steps commonly used in contra dances from 7:30 - 8:00 and from 8:00 - 10:30 all dances will be taught and called. Music will be provided by the Country Capers Celtic Duo (*Jane Landstra & Ken Embrey*; the muses are whispering that Charlie & TJ Faddis will join in).

No partners needed. Adults \$15. Youth (10-18) \$5.

Please wear clean-soled shoes to protect the oak floor.

Do you have info to distribute to KMTA?

Please send all communication items (website updates/documents, email blasts, Quavers articles, etc.) to Laura Meredith: laneredith@gmail.com. Plain text in an email body and image files work best.

Quavers articles should be submitted at least 3 days before the end of the month.

UPCOMING EVENTS
Check for registration deadlines, instructions, documents, contacts and more at the linked pages.

District III Conference
Saturday, October 12, Pacific Lutheran University

Chapter meeting
Friday, November 8, 10 am, Central Kitsap
Presbyterian

Kitsap Young Musician's Festival
Saturday, November 16, St. Antony of Egypt Episcopal
Church

MORE FROM KMTA
For the latest information on upcoming events, watch for email alerts to items posted on our

[News](#) page.

[KMTA on Facebook](#) [KMTA Website](#)

Copyright © 2019 Kitsap Music Teachers Association, All rights reserved.

Want to change how you receive these emails?
You can [update your preferences](#) or [unsubscribe from this list](#)

